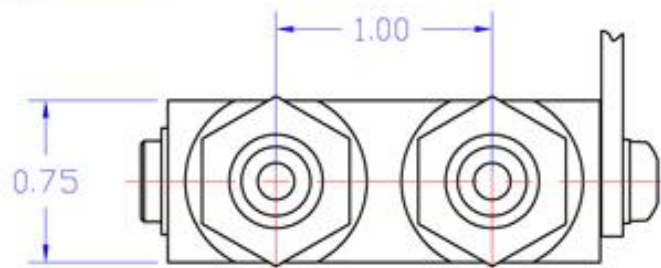
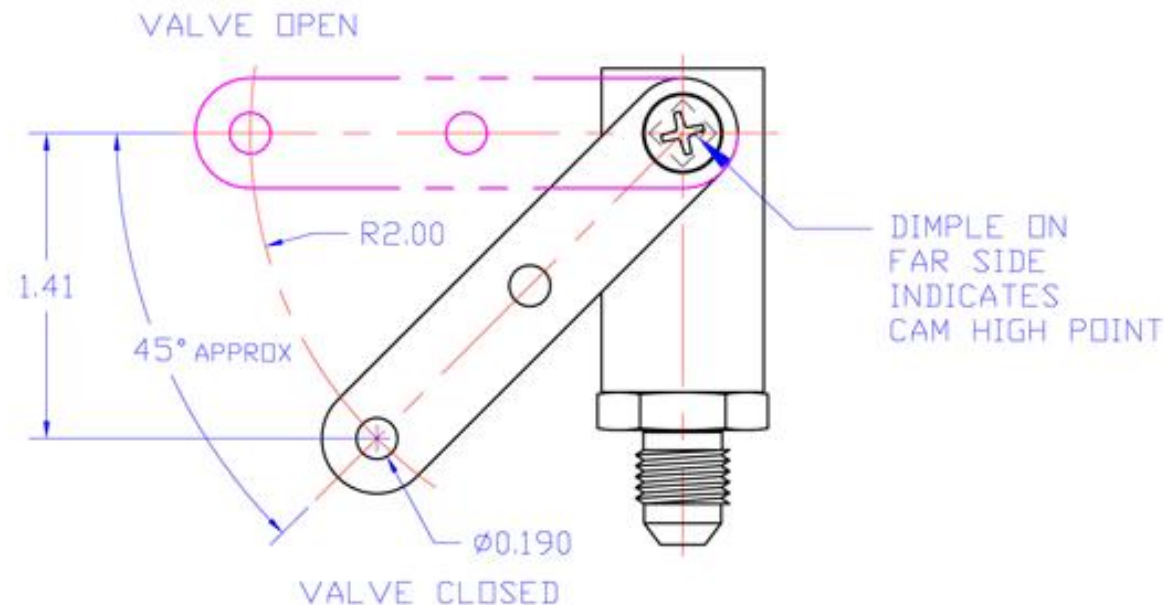
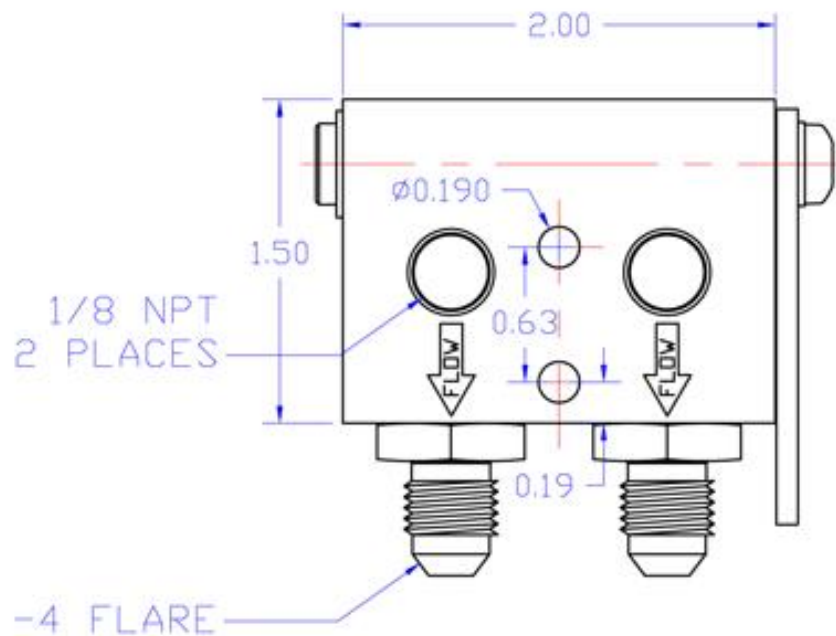


REVISIONS

CHG LTR	CHANGES	BY	DATE



NOTES

1. FOR USE WITH MIL-H-5606 HYDRAULIC FLUID
2. MAX OPERATING PRESSURE IS 1200 PSI.
3. WEIGHT .32 LBS

**Grove**

Aircraft Landing Gear Systems inc.  
1800 JOE CROSSON DRIVE, ELCAJON, CA 92020

PARKING BRAKE VALVE

TOLERANCE DECIMAL 0.XX= +/- .030 DECIMAL 0.XXX= +/- .010 DECIMAL 0.XXXX= +/- .005 ANGLE = 0.25 DEGREES	DRAWN BY R. P. Grove	DWG NO. 068-003	REV IR
DATE 8/22/07	SCALE None	SHEET 1 OF 1	